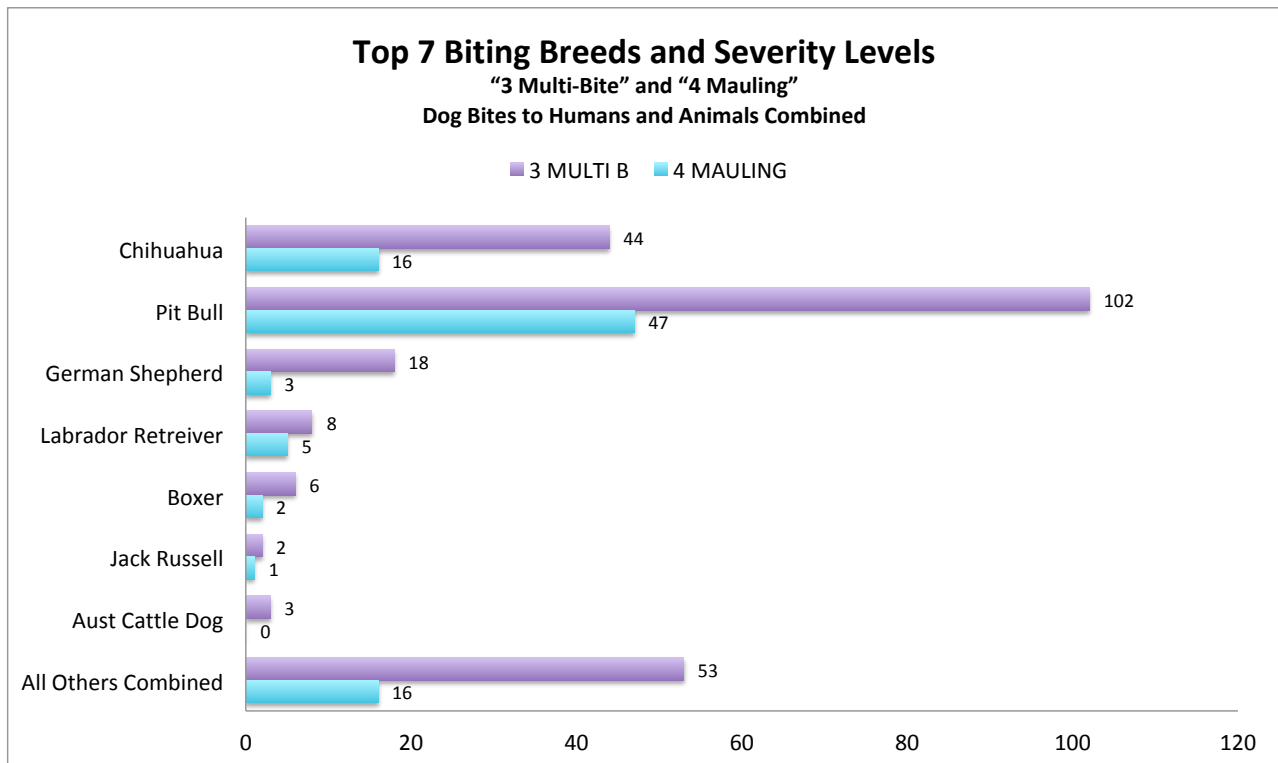


Top 7 Biting Breeds and Severity

Animal Care and Control, City and County of San Francisco
01/01/2014 to 12/31/2018

Data includes dog bites to humans and dog bites to animals (primarily pet dogs and cats). Data does not distinguish between the two.

PRIMARY BREED	0 SNGL	1 SNGL B	2 PROLONGB	3 MULTI B	4 MAULING	UNKNOWN	TOTAL	% TOTAL LEVEL 3 & 4
Chihuahua	386	638	93	44	16	104	1281	18%
Pit Bull	102	291	101	102	47	76	719	46%
German Shepherd	33	93	27	18	3	24	198	6%
Labrador Retriever	45	93	21	8	5	26	198	4%
Boxer	11	24	5	6	2	8	56	2%
Jack Russell	20	27	4	2	1	2	56	1%
Aust Cattle Dog	10	31	2	3	0	7	53	1%
All Others Combined	288	515	111	53	16	81	1064	21%
TOTAL	895	1712	364	236	90	328	3625	100%



"Chihuahua" combines: short and long haired Chihuahuas

"Pit Bull" combines: American pit bull terrier, American Staffordshire terrier, pit bull and Staffordshire Terrier

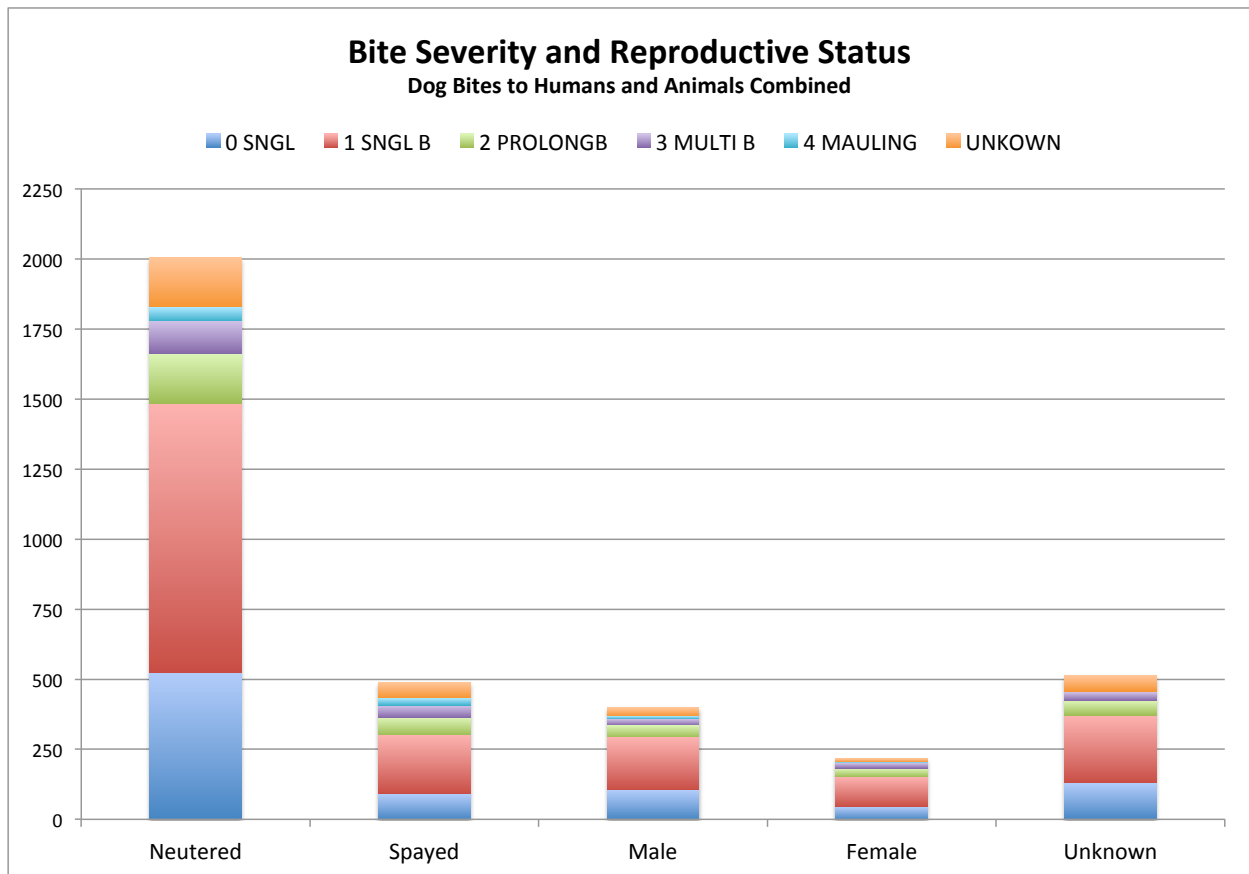
"Australian Cattle Dog" combines: Australian Cattle Dog and Queensland Heeler

Bite Severity and Reproductive Status

Animal Care and Control, City and County of San Francisco
01/01/2014 to 12/31/2018

Data includes dog bites to humans and dog bites to animals (primarily pet dogs and cats). Data does not distinguish between the two.

REP. STATUS	0 SNGL	1 SNGL B	2 PROLONGB	3 MULTI B	4 MAULING	UNKOWN	TOTAL	% TOTAL
Neutered	523	963	176	118	49	176	2005	55%
Spayed	91	211	62	44	26	56	490	14%
Male	105	189	43	23	10	29	399	11%
Female	46	107	30	20	3	12	218	6%
Unknown	130	242	53	31	2	55	513	14%
SUBTOTAL	895	1712	364	236	90	328	3625	100%
% Inflicted by neutered	58%	56%	48%	50%	54%	54%	55%	

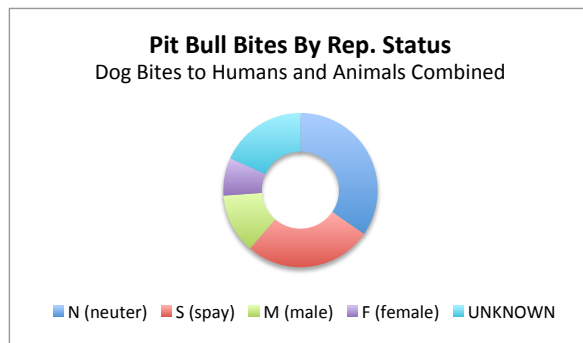
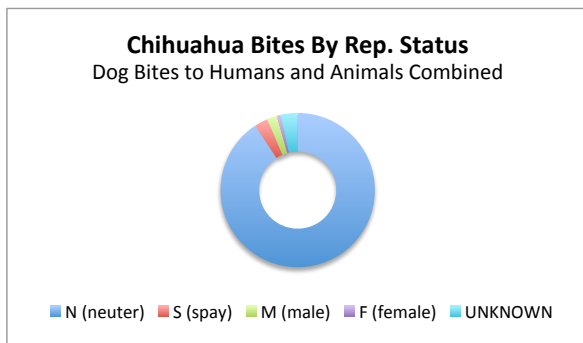


Top 4 Biting Breeds by Reproductive Status

San Francisco Animal Care and Control
01/01/2014 to 12/31/2018

Data includes dog bites to humans and dog bites to animals (primarily pet dogs and cats). Data does not distinguish between the two.

PRIMARY BREED	REP. STATUS	TOTAL	%	PRIMARY BREED	REP. STATUS	TOTAL	%
Chihuahua	N (neuter)	1162	91%	Pit Bull	N (neuter)	249	35%
Chihuahua	S (spay)	36	3%	Pit Bull	S (spay)	192	27%
Chihuahua	M (male)	27	2%	Pit Bull	M (male)	90	13%
Chihuahua	F (female)	10	1%	Pit Bull	F (female)	57	8%
Chihuahua	UNKNOWN	46	4%	Pit Bull	UNKNOWN	131	18%
TOTAL		1281	100%	TOTAL		719	100%



PRIMARY BREED	REP. STATUS	TOTAL	%	PRIMARY BREED	REP. STATUS	TOTAL	%
German Shepherd	N (neuter)	63	32%	Labrador Retriever	N (neuter)	69	35%
German Shepherd	S (spay)	34	17%	Labrador Retriever	S (spay)	35	18%
German Shepherd	M (male)	30	15%	Labrador Retriever	M (male)	35	18%
German Shepherd	F (female)	27	14%	Labrador Retriever	F (female)	9	5%
German Shepherd	UNKNOWN	44	22%	Labrador Retriever	UNKNOWN	50	25%
TOTAL		198	100%	TOTAL		198	100%

